

August 1999, Revision X2

1. You must be running NT 4.0 with Service Pack 3 or higher. We do not support older versions.

You must install BeamScope software with 'Administrator Rights'. 'User with Administrator Rights' may not be enough. [If you cannot even install the software, it may be that your NT Administrator (i.e. the person) has restricted your software installation rights, and must therefore be called in to install the software.]

2. Visit **www.dataray.com** in order to verify that you have the most recent software revision (5.2i at the time of writing). If you do, install the BeamScope software in the (Windows standard) manner instructed on the diskettes. If you do not have the latest version, you must upgrade or we cannot provide support.

**Either:** If you have already loaded the BeamScope software, download the **Bsexex.zip** file to a temporary file and extract into the Bscope5 directory. When the **Confirm file Overwrite** warning appears, select **Yes to All**.

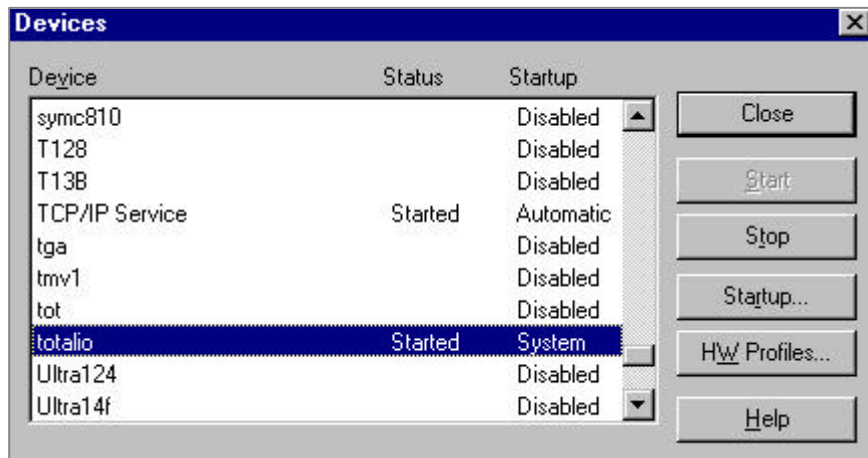
**Or:** To start again from scratch, download the **BSDisk1.zip** and **BSDisk2.zip** files

Extract both of them to a temporary folder (e.g. c:\DRaydisk) [or to diskettes].

Open Windows Explorer and double-click **Setup.exe** to install the program.

[At the same time, download any updated version of this Note, **BScopeNT.zip**, and any User Manual supplements from the site. If you are installing FieldPack under NT, also download **FPInstall.zip**.]

3. Double-click the BeamScope icon to start the software.
4. If the BeamScope software refuses to work, or it works once and then quits, you can thank Mr. Bill Gates for making NT much too fussy. Here's what we need to do:
5. With BeamScope closed, make sure that the file **totalio.sys** is in the WinNT root directory. Use Explorer to verify and/or copy it there, or in DOS, type: **copy \bscope5\totalio.sys \winnt** then press **Enter**
6. In the Control Panel there is an Icon called **Devices**. Double click it, to open the following dialog:



7. Select **totalio**. Note that **totalio** should be **Started** and is labeled **System**. **IT MUST BE THIS WAY.**  
If it is not labeled **System**, press the **Startup** button and change it to the **System** option. It may or may not complain about something, but if it does, just ignore it.  
If **Started** is not there, press the **Start** button. Finally **Close** the dialog box and restart BeamScope.
8. That's it. BeamScope should run now, next time, and every time after that. If not contact us as detailed at the website. (Currently call (303) 543-8235 or email info@dataray.com]