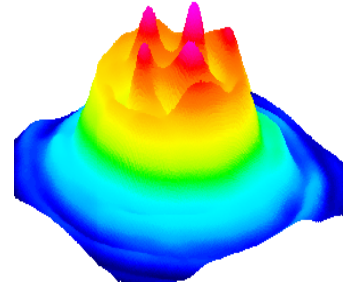


DataRay Inc.

Advancing the Technology of Laser Analysis

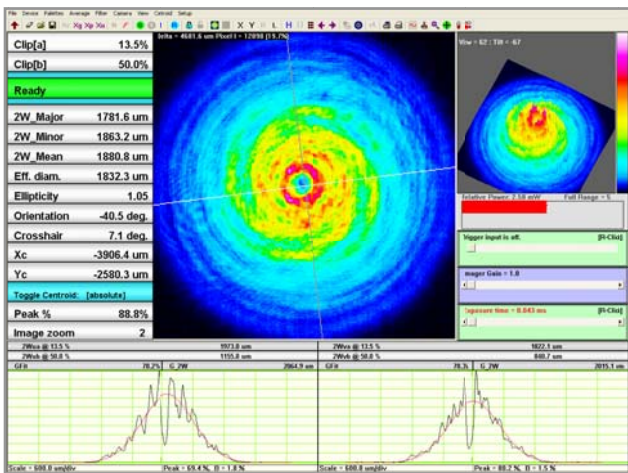
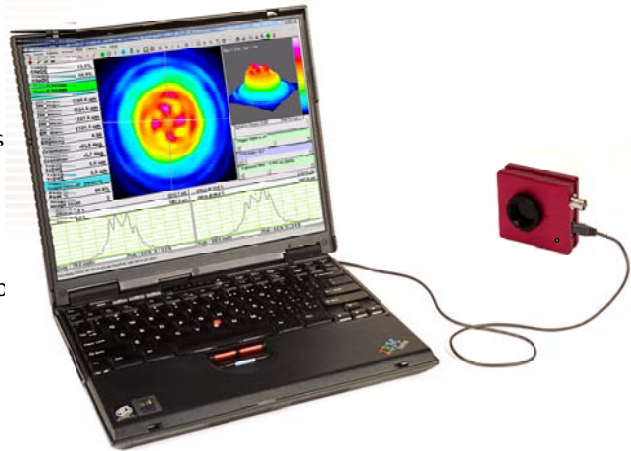
- WinCamD™ -UCD12** 1/2" CCD 14-bit ADC
- WinCamD™ -UCD23** 2/3" CCD 14-bit ADC
- WinCamD™ -UCM** 2/3" CMOS
- WinCamD™ -UHR** 5.2 μm CMOS
- WinCamD™ -UHS** High Speed-CMOS



Compact, Portable, Port-Powered, USB 2.0 Beam Profiling for Windows XP & Vista

WinCamD-U: Compelling Reasons to Purchase

- ◇ **More performance for up to \$1,000 less.** US List price is \$1,000 less than some 'Competing' products.
- ◇ **Multiple PC software license.** No extra charge for software installation on multiple machines.
- ◇ **USB 2.0 port-powered;** flexible 3 m cable; *no external power supply required.*
Some suppliers offer Firewire or USB 2.0 with a separately powered interface box.
- ◇ **1.12"/29 mm thin** (includes ND filter) to fit tight beam trains [0.90"/23 mm without filter]
Small, thin, and designed for small spaces.
- ◇ Digital CMOS/CCD cameras with on-chip 10-bit or external **14-bit ADC.**
The only 14-bit ADC offered.
- ◇ 4 MB image buffer & on-board microprocessor
- ◇ **Window-free sensors** standard for no fringing
- ◇ **20,000:1 electronic auto-shutter,** 50 μs –1000 ms
- ◇ **1,000:1 SNR options** (30/60 dB Optical/Electrical)
- ◇ Pulsed laser **Auto-trigger** and **synchronization**
- ◇ Parallel capture on **multiple** cameras.
- ◇ **Discount for multiple cameras** on the same Laptop
- ◇ **Field-replaceable image sensors**
If you fry the sensor you can replace the sensor only,
- ◇ **Portable USB 2.0 M² Accessory.**
- ◇ **3-year Warranty** – excludes customer damage.



Camera shown actual size
2.40 x 2.65 x 1.12" (x0.9" without filter) [61 x 67 x 28 mm]

